

# ClearOne®

**CHAT® 150 | CHATAttach® 150**

Group Speakerphone

Quick Start Guide



# Table of Contents

<b>CONFIGURING THE CHAT 150</b> .....	<b>1</b>
<b>CHAT 150 FEATURES</b> .....	<b>2</b>
<b>CONNECTING YOUR CHAT 150</b> .....	<b>3</b>
CONNECTING THE CHAT 150 TO A PC .....	3
<b>CONFIGURING AND TESTING YOUR CHAT 150</b> .....	<b>4</b>
CHAT 150 AUDIO CONFIGURATION.....	4
CHATATTACH™: CONNECTING TWO CHAT DEVICES .....	5
<b>USING THE CHAT 150</b> .....	<b>6</b>
CHAT 150 LED INDICATORS.....	6
VOLUME & MUTE BUTTONS .....	6
<b>CHAT 150 SPECIFICATIONS AND REQUIREMENTS</b> .....	<b>7</b>
SYSTEM REQUIREMENTS .....	7
CONNECTIONS .....	7
AUDIO.....	7
SPEAKER .....	7
MICROPHONE(S) .....	7
POWER.....	7
CONTROLS .....	7
ENVIRONMENTAL.....	7
PROCESSING .....	7
LINE INPUT/OUTPUT VIA VC BoB .....	7
MECHANICAL .....	7
COMPLIANCE .....	7
MODEL NUMBERS .....	7

### CONFIGURING THE CHAT 150

The CHAT 150 can be used right out of the box and there's no software to download or install if it is to be used only with a PC.

If the CHAT 150 is to be used with any other device or if the CHAT 150 firmware requires updates, follow the instructions in the CHAT 150 User's Manual to setup and configure the CHAT 150.

The latest version of the software and CHAT 150 User's Manual can be found on the ClearOne Website at:

**<http://www.clearone.com/support/downloads.php?content=main>**

Scroll down the page to the CHAT 50/150 section and click the relevant links.

Follow the instructions in the manual to install and configure the CHAT 150 device.

## CHAT 150 FEATURES

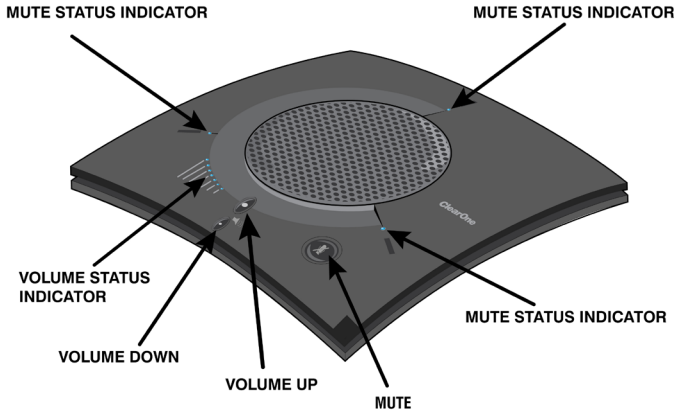


Figure 1 - CHAT 150 Features

**Important!** CHAT devices are designed to work on flat, stable surfaces with no obstructions. For best results, do not hold or move the device while in use.

### CONNECTING YOUR CHAT 150

The following describes how to connect your CHAT 150 to a PC.

The CHAT 150 can also be connected to a number of other devices. For information on connecting the CHAT 150 to other devices, refer to the CHAT 150 User's Manual.

#### CONNECTING THE CHAT 150 TO A PC

Use the included USB 2.0 cable to connect the CHAT 150 to your PC (Figure 2.0).

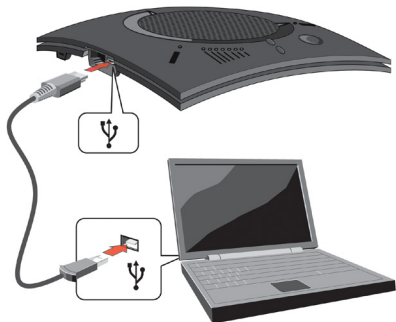


Figure 2 - Connecting to a PC

### CONFIGURING AND TESTING YOUR CHAT 150

Consult the CHAT 150 User's Manual for all device and software configuration procedures as needed.

#### CHAT 150 Audio CONFIGURATION

To ensure optimal sound quality, the CHAT 150 **MUST** be tuned properly prior to use or after the device has been moved. The CHAT 150's audio settings must also be customized for the specific application it is to be used with and for the specific device it is to be connected to.

The CHAT 150 derives its audio settings from the Windows sound settings if it is attached to a PC or through the 3rd party application's settings (Skype, Yahoo, etc.) Refer to the tuning procedures in the **Optimizing Sound Quality** section in the **CHAT 150 User's Manual** or consult the specific 3rd party application's tuning adjustments.

For further details on configuring various devices for the CHAT 150 audio settings, refer to the **CHAT 150 User's Manual**.

### CHATATTACH™: CONNECTING TWO CHAT DEVICES

The CHATAttach accessory allows two CHAT devices to be connected together for use in larger conference settings.

Certain restrictions and requirements must be met in order to use the CHATAttach accessory. For a complete list and detailed instructions, consult the CHATAttach or the CHAT 150 User's Manual.

1. Attach the specially keyed CHATAttach cable to both CHAT 150 devices (Figure 2.0).
2. Plug the power supply into the power source.
3. Connect the female/male ends of the power cable together.
4. Place the CHAT 150 units at least 5' apart.

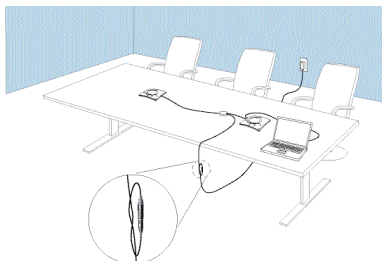


Figure 3 - CHATAttach Connection

## CHAT 150 Group Speakerphone

### USING THE CHAT 150

#### CHAT 150 LED INDICATORS

The three microphone LED indicators illuminate blue when the CHAT 150 microphones are active. The indicators illuminate red when the microphones are muted.

The seven volume LED indicators illuminate blue to indicate the current volume setting—more lights indicate higher volume.

#### VOLUME & MUTE BUTTONS

Use the **Volume Up/Down** buttons (indicated by a large dot and a small dot) to adjust the volume level of the CHAT 150. Holding down either button will change the volume rapidly.

Use the **Mute** button to mute the CHAT 150's microphone until the **Mute** button is pressed again. If you are using the CHAT 150 with a PC, you can also use the Speaker Volume Control in Windows, as well as the CHAT software to adjust the volume and mute the microphone.



# SPECIFICATIONS AND REQUIREMENTS

### System Requirements

Microsoft Windows XP, Vista, 7 or 8

### Connections

#### USB:

2.0 Compatible, Type: Mini-B Female

**Keyed:** RJ-45 (8-conductor)

#### Line Input/Output via VC BoB:

Frequency Response:

20 Hz - 20 kHz +/- 1 dB

Maximum Input Level: +6 dBu

Input Impedance: 10 k $\Omega$

Output Impedance: 50  $\Omega$

### Audio

#### Speaker

Bandwidth: 190 Hz – 20 kHz

Maximum Output Level:

85 dB SPL @ 1 foot (0.30 meter)

#### Microphone(s)

Bandwidth: 50Hz – 7.75 kHz

### Power

#### USB:

5 VDC @ 500mA Maximum

#### External:

100 - 240 VAC Input, 9 VDC @ 560 mA

Output, Tip: Power, Ring: Ground

### Controls

Volume Up

Volume Down

Microphone Mute

### Environmental

Operating Temperature:

41 - 104° F (5 - 40° C)

### Processing

Full Duplex

Distributed Echo Cancellation  
(D. E. C.)®

Noise Cancellation (NC)

Automatic Level Control (ALC)

Line Echo Cancellation (LEC) -  
Selectable

First Mic Priority

### Mechanical

Dimensions (W x D x H):

7.4" x 7.4" x 1.8"

(18.8 cm x 18.8 cm x 4.6 cm)

Weight: 1.17 lbs (0.53 kg)

### Compliance

RoHS, REACH

FCC Class A Part 15

ICES-003, CE Listed, UL Listed

### Model Numbers

910-156-200 CHAT 150 USB

910-156-200-00 CHATAttach 150

910-156-222 CHAT 150 Avaya

910-156-220 CHAT 150 Cisco

910-156-230 CHAT 150 VC



**Caution:** Read the Safety Information in the instruction manual.

## Technical Support

<b>TELEPHONE</b>	1.800.283.5936
<b>FAX</b>	1.801.974.3669
<b>Email</b>	<a href="mailto:tech.support@clearone.com">tech.support@clearone.com</a>

U.S. PATENTS: D539,274; D556,189; D531,999.

OTHER PATENTS PENDING.

© 2014 ClearOne, Inc. All rights reserved.

Information in this document is subject to change without notice. 800-156-202 Revision 2.4 July, 2014

# ClearOne®

CHAT® 150 | CHATAttach® 150

多方会议扬声器

快速入门指南



# 目录表

配置 CHAT 150 .....	1
CHAT 150 特性 .....	2
连接您的 CHAT 150 .....	3
将 CHAT 150 连接到 PC .....	3
配置和测试您的 CHAT 150 .....	4
CHAT 150 音频配置 .....	4
CHATATTACH™: 连接两个 CHAT 设备 .....	5
使用 CHAT 150 .....	6
CHAT 150 LED 指示灯 .....	6
音量和静音按钮 .....	6
CHAT 150 规格和要求 .....	7
系统要求 .....	7
连接 .....	7
音频 .....	7
扬声器 .....	7
麦克风 .....	7
电源 .....	7
控制 .....	7
环境 .....	7
处理 .....	7
通过 VC BoB 的输入/输出线路 .....	7
机械 .....	7
合规性 .....	7
型号 .....	7

### 配置 CHAT 150

CHAT 150 可以开箱即用。如果仅用于 PC，不必下载或安装任何软件。

如果 CHAT 150 要与任何其他设备一起使用或是 CHAT 150 固件需要更新，请按照 CHAT 150 用户手册中的使用说明来设置和配置 CHAT 150。

CHAT 150 用户手册和最新版本软件可以在 ClearOne 公司网站上找到：

**<http://www.clearone.com/support/downloads.php?content=main>**

仅需向下滚动页面，找到 CHAT 50/150 的部分，并点击相关链接即可。

请按照手册中的说明来安装和配置 CHAT 150 设备。

## CHAT 150 Group Speakerphone

### CHAT 150 特性

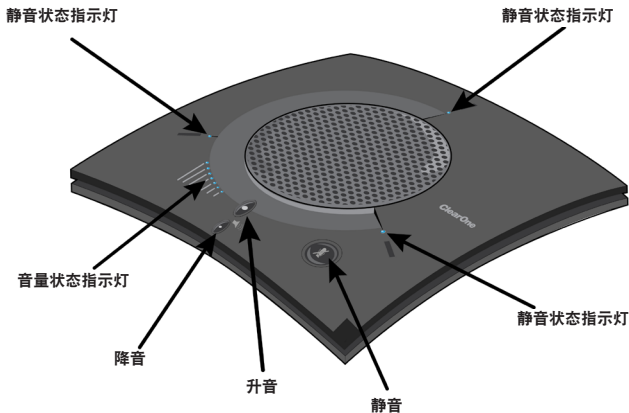


图 1 - CHAT 150 特性

**重要提示！** CHAT 设备需要在没有障碍物而且平滑、稳定的表面运作。为了达到最佳效果，请不要在使用时手持或移动此设备。

## 连接您的 CHAT 150

下面描述了如何将您的 CHAT 150 连接到 PC 上。

CHAT 150 还可以连接到许多其他设备。如想将 CHAT 150 连接到其他设备，请参阅 CHAT 150 用户手册。

### 将 CHAT 150 连接到 PC

使用附带的 USB 2.0 电缆将 CHAT 150 连接到您的 PC 机上（见图 2）。

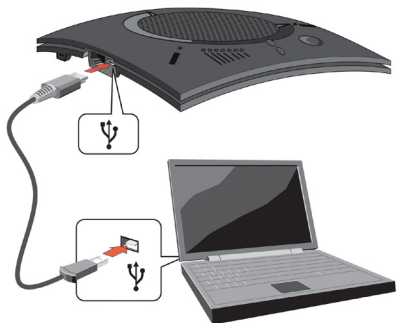


图 2 - 连接到一台 PC

### 配置和测试您的 CHAT 150

所有设备和软件所需的配置过程可查阅 CHAT 150 用户手册。

#### CHAT 150 音频配置

为了保证最佳的音质，CHAT 150 **必须**在使用之前或是在设备被移动之后进行恰当的调整。CHAT 150 的音频设置也必需要为使用的特定应用程序或是连接的特定设备而定制。

如果 CHAT 150 是直接连接到一台 PC 或是通过第三方应用程序（如 Skype, Yahoo 等）设置来连接，扬声器的音频设置便源于 Windows 的声音设置。请参阅 **CHAT 150 用户手册**中的**优化声音质量**章节或咨询具体的第三方应用程序优化调整。

为了进一步了解如何配置各种设备来适应 CHAT 150 音频设置，请参考 **CHAT 150 用户手册**。



### CHATATTACH™：连接两个 CHAT 设备

CHATAttach 配件允许两个 CHAT 设备连接在一起，应用于大型会议。

为了使用 CHATAttach 配件，必须满足一定的限制和要求。有关完整列表和详细说明，请查阅 CHATAttach 或 CHAT 150 用户手册。

1. 将带有卡扣的 CHATAttach 电缆连接到两台 CHAT 150 设备（图 2）。
2. 将电源线插入电源插座。
3. 将电源线的公/母头相互连接在一起。
4. 将 CHAT 150 的每个装置放置距离应相隔 5 英尺以上。

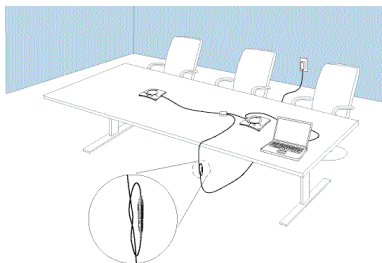


图 3 - CHATAttach 的连接

## CHAT 150 Group Speakerphone

### 使用 CHAT 150

#### CHAT 150 LED 指示灯

当 CHAT 150 的麦克风处于激活状态时，麦克风 LED 指示灯会亮起三个蓝灯。当麦克风静音时，这些指示灯会亮起红灯。

七个音量 LED 指示灯亮起蓝灯时表明当前的音量设置，音量越高则亮的灯越多。

#### 音量和静音按钮

使用**音量升/降**按钮来调整 CHAT 50 的音量级别（按钮分别用一个大圆点 and 一个小圆点来标识）。长按住按钮会迅速改变音量。

使用**静音**按钮可以使 CHAT 150 的麦克风静音，再次按**静音**按钮可取消静音。如果您正在通过一台 PC 机使用 CHAT 150，您可以使用 Windows 中的扬声器音量控制，也可以通过 CHAT 软件来调整音量和使麦克风静音。

## 规格和要求

### 系统要求

Microsoft Windows XP, Vista, 7 或 8

### 连接

#### USB:

2.0 兼容, 类型: Mini-B 母头

**带卡扣的:** RJ-45 (8 芯)

#### 通过 VC BoB 的输入/输出线路:

频率响应:

20 Hz - 20 kHz +/- 1 dB

最大输入电平: +6 dBu

输入阻抗: 10 k $\Omega$

输出阻抗: 50  $\Omega$

### 音频

#### 扬声器

带宽: 190 Hz - 20 kHz

最大输出电平:

85 dB SPL @ 1 foot (0.30 米)

#### 麦克风

带宽: 50Hz - 7.75 kHz

### 电源

#### USB:

5 VDC 最大电流: 500mA

#### 外部:

输入电压: 100 - 240 VAC, 9 VDC,

输出电流: 560 mA, 尖端: 电源,

外环: 地

### 控制

音量升高

音量降低

麦克风静音

### 环境

运作温度:

41 - 104° 华氏度 (5 - 40° 摄氏度)

### 处理

全双工

分布式回声消除 (D. E. C.)<sup>®</sup>

噪音消除 (NC)

自动电平控制 (ALC)

线路回声消除 (LEC) - 可选

第一麦克风优先

### 机械

外形尺寸 (W x D x H):

7.4" x 7.4" x 1.8"

(18.8 cm x 18.8 cm x 4.6 cm)

重量: 1.17 lbs (0.53 kg)

### 合规性

RoHS, REACH

FCC Class A Part 15

ICES-003, CE 认证, UL 标准

### 型号

910-156-200 CHAT 150 USB

910-156-200-00 CHATAttach 150

910-156-222 CHAT 150 Avaya

910-156-220 CHAT 150 Cisco

910-156-230 CHAT 150 VC



**注意：** 请阅读使用手册中的安全信息

## 技术支持

<b>电话</b>	1.800.283.5936
<b>传真</b>	1.801.974.3669
<b>电邮</b>	tech.support@clearone.com

美国专利: D539,274; D556,189; D531,999.

其他专利待批。

© 2014 ClearOne, Inc. 版权所有。

本文档中的信息如有更改，恕不另行通知。800-156-202 版本 2.4，2014 年 7 月